

Technical Specifications

video

PTZ^X12 **PTZ^X40**

camera	Sony block camera	
image sensor	1/4" Exview HAD CCD	
effective pixels (NTSC/PAL)	380K/440K	480K/570K
video output	PAL/NTSC composite	
optical zoom	12x	40x
digital zoom	12x	12x
total magnification	144x	480x
sensitivity	1.0 lux	0.6 lux
auto/manual focus	28 cm to ∞	1 cm to ∞
min. foc. dist. (wide/tele)	11.0"/31.5"	0.4"/59.1"
hor. FOV (wide/tele)	54/4.6 deg	60/1.6 deg
brightness adjustment	±10.5 dB	

construction

camera head diameter	3.5" (89 mm)	4.3" (109 mm)
with auxiliary HID lights	6.0" (152 mm)	6.8" (172 mm)
with auxiliary LED lights	5.4" (137 mm)	6.2" (157 mm)
camera head length	18" (452 mm)	18.9" (479 mm)
camera head weight	6 lb (2.7 kg)	6.3 lb (3.0 kg)
material	nickel-plated aluminum, stainless	
pressure rating	44 psi (3 bar)	
cable reel length	150' (45m)	
base station dimensions	13.2x12.2x10.6" (330x310x270 mm)	
base station weight	21 lb (9.5 kg)	

lighting

built-in adjustable LEDs	0-1200 lumens	0-1700 lumens
optional LED aux. spot lamps	1000 lumens (500 lumens x 2)	
optional HID aux. flood lamps	4000 lumens (2000 lumens x 2)	

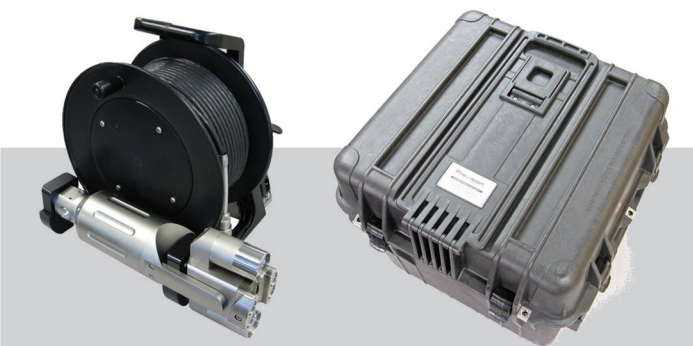
controls

PTZ^X12 **PTZ^X40**

pan range (left joystick left/right)	360 deg continuous	
tilt range (left joystick up/down)	±122 deg	±135 deg
pan/tilt speed	0-5 rpm	
home feature (left joystick button)	resettable position	
zoom (right joystick up/down)		
manual focus (right joystick left/right)		
auto focus (right joystick button)		
image effects	grid, reticle, flip, negative, freeze	

power

input	100-240 Vac, 4A, 50-60 Hz
-------	---------------------------



The PTZx Inspection Camera System comes complete with a customized shipping case that offers mobility and protection for your equipment.

It houses a custom foam cutout to fit the PTZx system, with a zipper pocket organizer in the lid. The case also features a built-in spring loaded pull handle with 2-person fold-down handles for ease of lifting.



PTZ^X Inspection Camera System

Turn-key pan/tilt camera with expandable illumination fits through sub-4" openings.



- ideal for:**
- Storage tanks and vessels (underground and above)
 - Nuclear reactor pressure vessels and fuel pool
 - Refractory-lined vessels, drums, towers, stacks
 - Underground vaults, manholes, shafts

PTZ X



This sub-4" portable camera inspects storage tanks, vessels, drums, towers, stacks, piping and confined spaces. Integral LED lights output 1700 lumens, with optional auxiliary boosting output up to 5700 lumens. Other features include a low-lux, high-res CCD imager, zoom optics and continuous rotation plus 270 degrees of tilt.



DVR Monitor

- 5" TFT color LCD screen with sun shield
- Date/time stamp
- Stills captured as uncompressed BMP
- Video recorded as AVI
- Integrated mic with on/off
- SDHC card storage up to 32GB
- Toshiba FlashAir SD card compatibility

Control Unit

- 45m cable reel, extendable up to 90m
- Auto/manual focus
- Adjustable light intensity control
- Camera position memory
- Image control (below, left to right: grid, reticle, negative image, image flip, freeze frame)



360-degree continuous rotation; 270-degree tilt

12x or 40x optical zoom

High-res CCD imager with sensitivity control for reflective surfaces

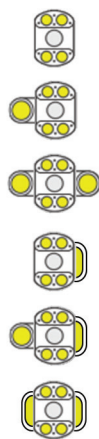
Corrosion-resistant nickel-plated aluminium with stainless steel

Submersible to 100'

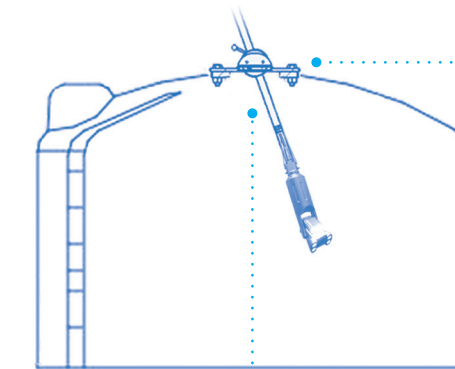
LED lamps to 5700 lumens

Auxiliary LED Flood Light
17 W, 2000 lumens (x2)

Auxiliary LED SPOT Light
9W, 500 lumens

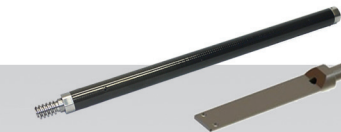


configuration	lumens (12x/40x)
integral light	1200/1700
integral + spot (x1)	1700/2200
integral + spot (x2)	2200/2700
integral + flood (x1)	3200/3700
integral + spot (x1) + flood (x1)	3700/4200
integral + flood (x2)	5200/5700



Magnetic Base

- Four disc magnets with rubber mounts for uneven surfaces
- Allows camera to hang from steel surface
- Anodized aluminum



Lowering Pole

- Carbon fiber tubing
- 6" (1.8m) length each
- Connect two or more
- Threaded stainless ends
- Cam lock safety screw



Tank Flange Mount

- Mounts to flanged openings 4-24" (DN150-DN600)
- Clamps pole to stabilize camera
- Aluminum construction

Pole Camera Adapter

- Mounts to camera base with included screws
- Threads onto pole
- Stainless steel