

QSR1[®]



8" to 16" Diameter Pipe



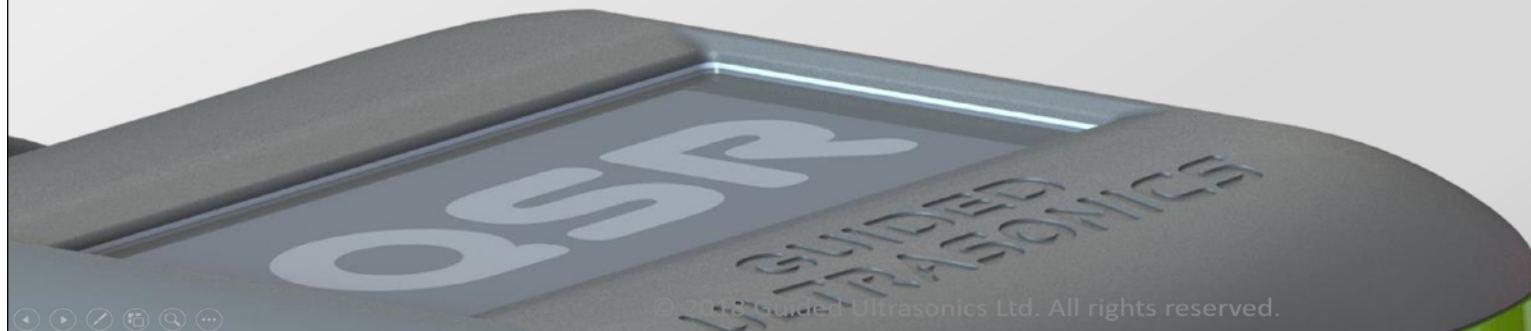
6mm to 14mm (¼" to ½") Wall Thickness

- GUL's new quantitative short range (QSR) device, incorporating the latest guided wave technology and hardware.
- Designed to semi-automatically scan predefined sections of straight pipelines for corrosion under pipe supports (CUPS).
- Can provide a quantitative measure of the average wall, as well as the remaining wall thickness down to half of the nominal wall thickness.

QSR[®] Scanning

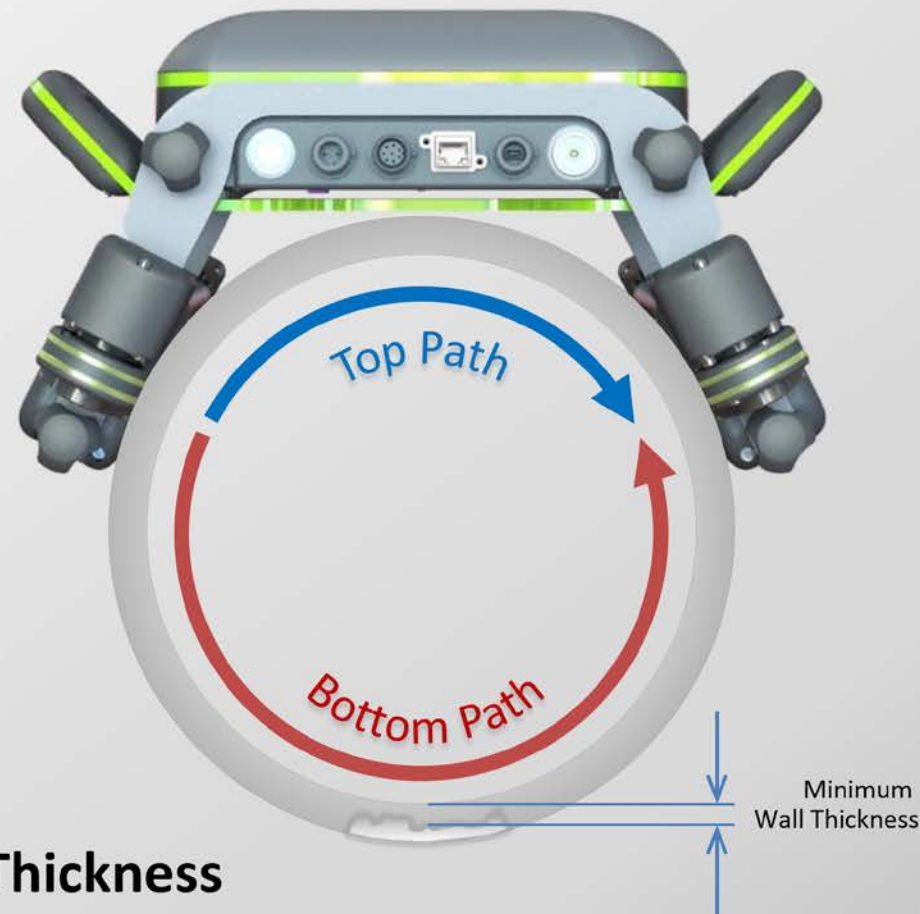


- QSR[®] procedures are currently designed for the inspection of Horizontal Pipes for Simple Touch Point Corrosion.
- QSR[®] automatically measures the size of corrosion of depths up to half of the pipe wall thickness, which extends at least 1.5 inches axially.
- Qualitative results are obtained for deeper wall losses
- Scanning is done along the top of the pipe under its own power.
- The system does not require the use of any couplant.
- Inspection is possible through thin coatings.





- QSR[®] automatically measures at each location:



- Pipe Diameter
- Top Path Wall Thickness
- Bottom Path Wall Thickness
- Bottom Path **Minimal Wall Thickness**

- Simple Supports
- Pipes resting on beams

Not yet covered:

- Saddle Supports
- Circumferential Groves
- Clamp U-Bolt
- Welded Supports
- Penetrations

